



ANDREA BRAND

art for living

“I am firstly an artist. Being a surface designer was a natural transition from my love for colour, texture and ancient cloth traditions...”

DESIGNED WITH *purpose*

A lifelong fascination with texture and colour paves the road of my artistic journey, whilst an innate curiosity and thirst for travel feed my love for collecting fabrics. Markets draped in colour, obscure fabric peddlers and hidden shops stacked to the roof with layers of textured cloth tell us stories of the traditions, culture and history of the people who wear and use it.

I am firstly an artist. Being a surface designer was a natural transition from my love for colour, texture and ancient cloth traditions.

Life inspires me every day and I want to fill the world with beauty that evokes inner movement and change.

“I want to fill the world with beauty that evokes inner movement & change.”

playing with LIGHT

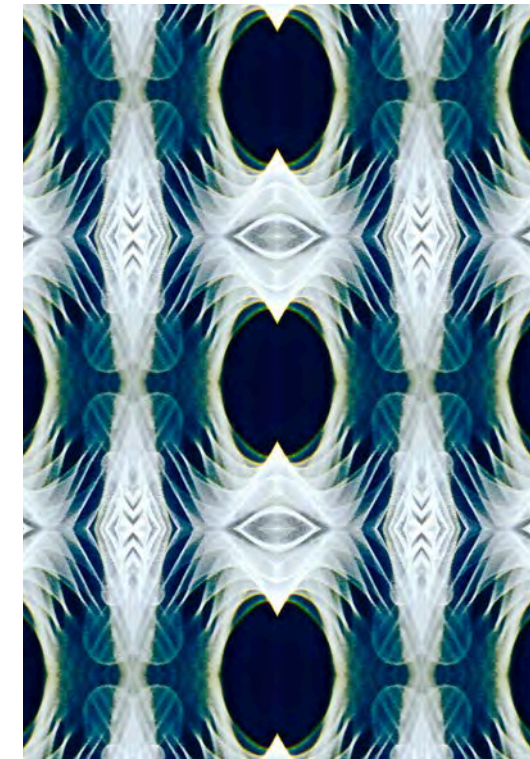
The Light Matrix collection delves into the duality of the world we currently live in.

The narrow edges between the opposite dimensions subtly dissolve into colour - reflecting the transitioning from the old to the new.



“Transitioning from the old to the new...”

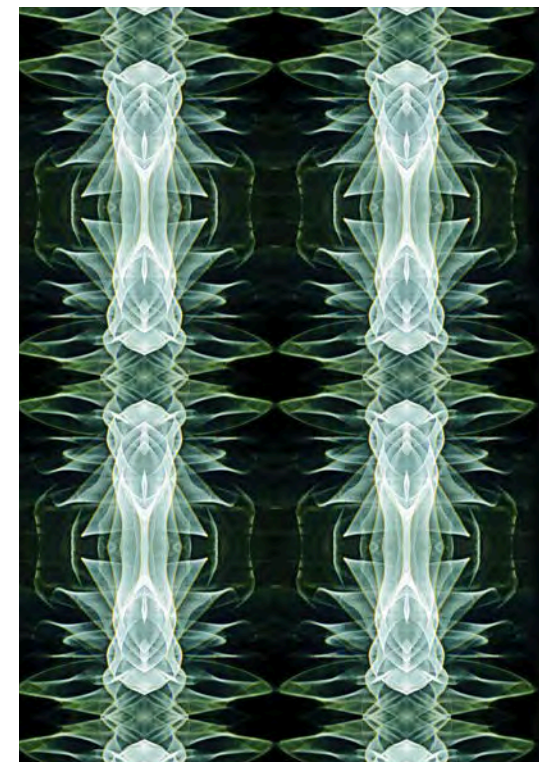




The collections are all digitally printed on high-quality fabrics, and the use of luxurious fabrics like silk and silk hemp, have led to explorations of fashion and lifestyle ranges.



*“Art
illuminates
& transforms
the beauty
within the
chaos. This
stimulates
change.”*



Individualised interior
pieces are created by
transferring designs
onto surfaces like wood,
upholstery and wallpaper.



“Colour influences the spaces we live and work in.”

MARBLE GREEN

COLOUR GIVES *connection*

The Marble collection captures moments during the alchemistic process of oil floating on water, symbolising a connection with the flow of life.

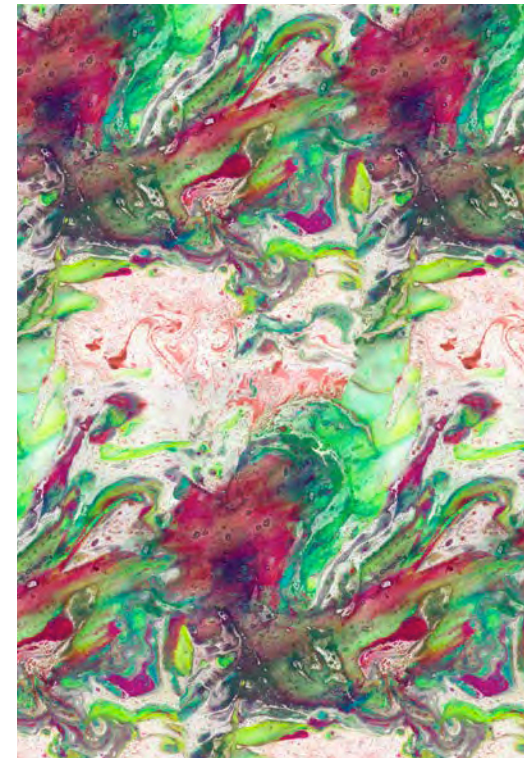




“Curiosity draws me into discovering the unusual.”

The expression of the multi-coloured marble range allows for the introduction of singular colours into interior spaces.

The combination of purple and green nurtures the process of uniting head and heart. It enables a shift from the old ways of thinking and perceptions of the world.



shades of SUMMER

*“Colour
activates creative
expression &
communication,
whilst enabling
our perceptions
to shift and our
hearts to open.”*

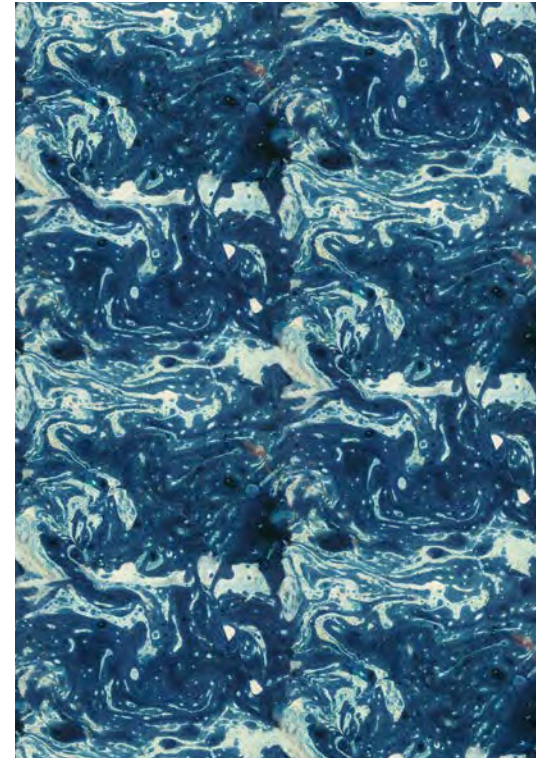


MARBLE TURQUOISE



Cushions and curtains
are produced from
eco-friendly fabrics like
linen and hemp.

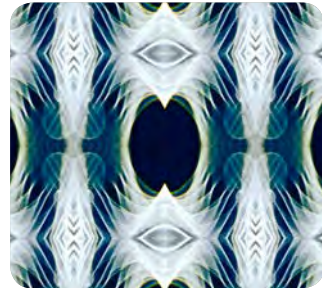
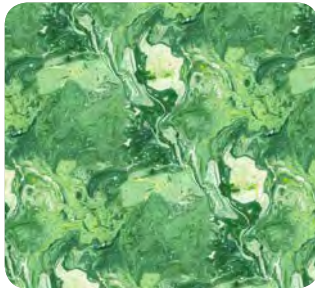
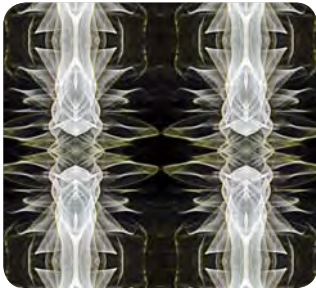
“The symbolic meaning of each colour breathes unique beauty and flow into the spaces we live in.”



The nature of the designs allows for it to be transferred onto any surface that the individual user aspires to have in their space.







uniquely inspired

email: studio@andreabrand.co.za

tel: 021 433 2597 mobile: 082 825 3011

www.andreabrand.co.za