



ANDREA BRAND

art for living

*Please contact me  
directly for all fabric and  
upholstery enquiries:*

studio@andreabrand.co.za mobile: 082 825 3011

www.andreabrand.co.za

Everything leaves behind  
a footprint - a trace -  
that tells a story to the  
traveler that comes across it





# TRACES COLLECTION

All my work is influenced by my interaction with Nature and its cycles, symmetry and mysteries. It is incredible how the detail one finds in the smallest things is echoed in larger bodies. There is a stillness in Nature's symmetry and its perfect repetition.

My 2018 Traces Collection, found its form in the lush beauty and layered depth of an island jungle and in the fascinating lifecycle of leaves - growth to decay, and decay feeding growth. There are three ranges within the collection: Jungle, Leaf Green and Autumn.







# jungle

A NEVER-ENDING ABUNDANCE OF  
LEAVES AND MULTI-DIMENSIONAL  
LAYERS OF GREEN



## JUNGLE

Individualised interior pieces are created by transferring designs onto surfaces like wood, upholstery and wallpaper. We are always on the look-out for materials that can be produced with the smallest ecological footprint and that can harmlessly return to the earth.







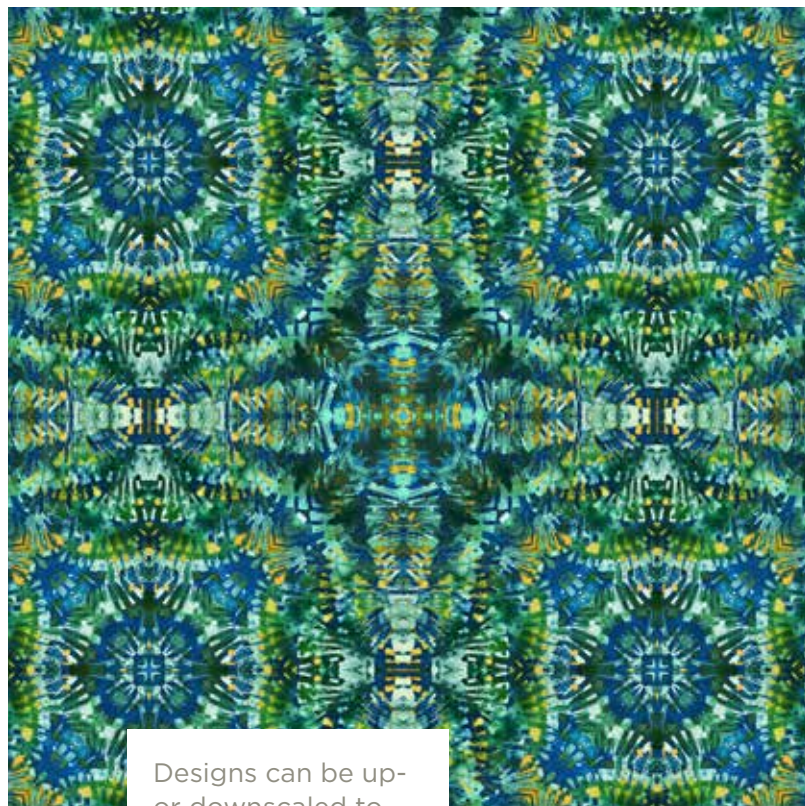
JUNGLE

*The jungle brings a deep sense of well-being and creative nourishment.*

This range is inspired by the lush jungle of Pemba island, Tanzania. Playing with different brushes and layering to create the depth of the pristine wilderness. More than just a visual effect, the colours represent the mood of the overlapping foliage.







Designs can be up-  
or downscaled to  
suit the items they  
are printed on.

*Go confidently in the  
direction of your dreams  
live the life  
you've always imagined*





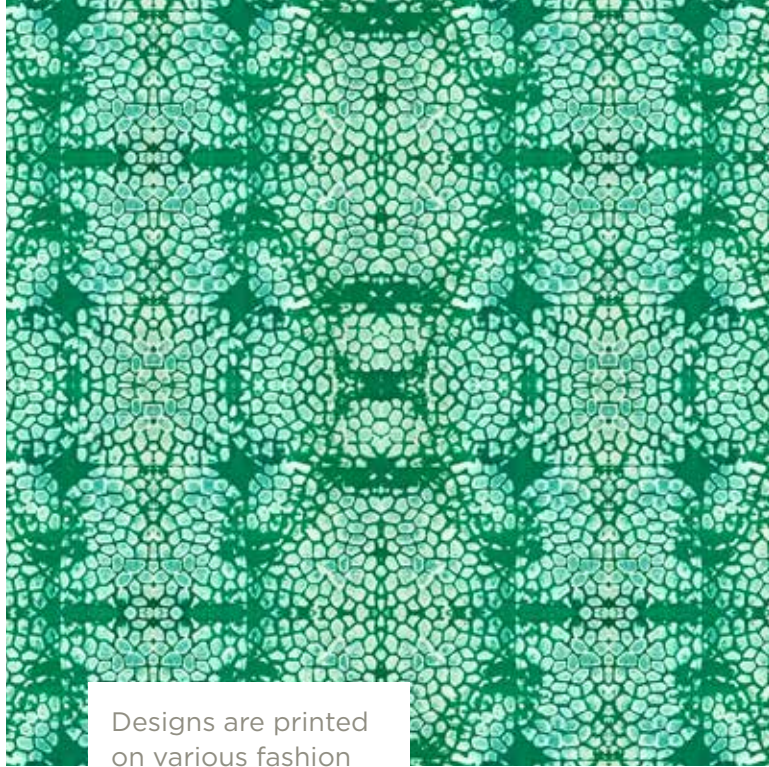
The background of the entire image is a detailed, artistic rendering of a leaf's cross-section. It shows the intricate network of veins and the cellular structure of the leaf tissue. On the left side, there is a vertical color calibration strip consisting of five distinct color blocks: yellow, light blue, teal, light green, and orange. The text 'leaf GREEN' is prominently displayed on the right side of the image.

# leaf GREEN

THE PERFECTION AND BEAUTY  
IN THE SYMMETRY OF NATURE



## LEAF GREEN



Designs are printed on various fashion and interior fabrics - ranging from silk, silk hemp, linen, to stronger upholstery fabrics.







LEAF GREEN

Combine designs from the three ranges in the Traces Collection to create the full visual experience of the seasons - from the green bursts of new life to the subtle colours of Autumn.

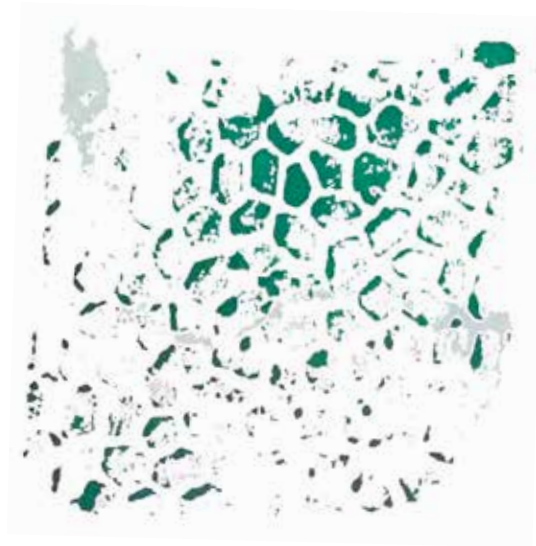




LEAF GREEN

*The inner structure of a vibrant green leaf as inspiration.*

The Leaf Green range is the artist's interpretation of the fractal-like symmetry and microscopic structure of green leaves through the use of Indian printing blocks.







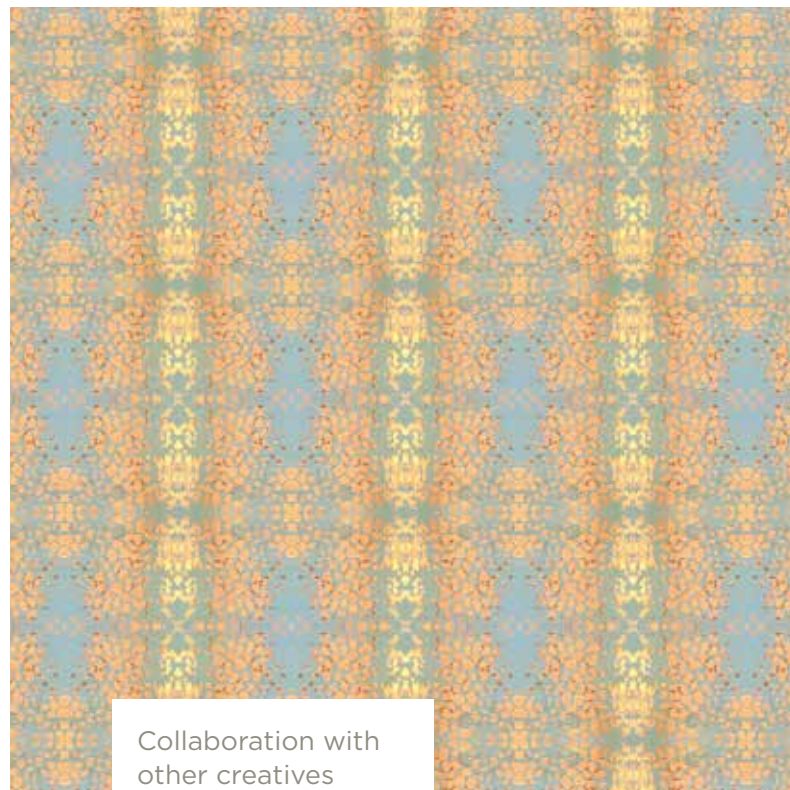
LEAF GREEN



*Symmetry in Nature holds  
a deep mystery*



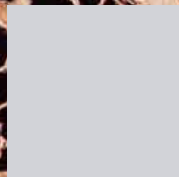
LEAF GREEN



Collaboration with other creatives deepens the scope of one's art and designs.







# autumn

TRACES OF TRANSFORMATION IN  
LEAF SKELETONS AS THEY DECAY  
TO NURTURE NEW BEGINNINGS



Mad desire for Desire  
and the Water of life makes  
love enflame a thousand  
thousand fires and furnaces  
every second

Rumi





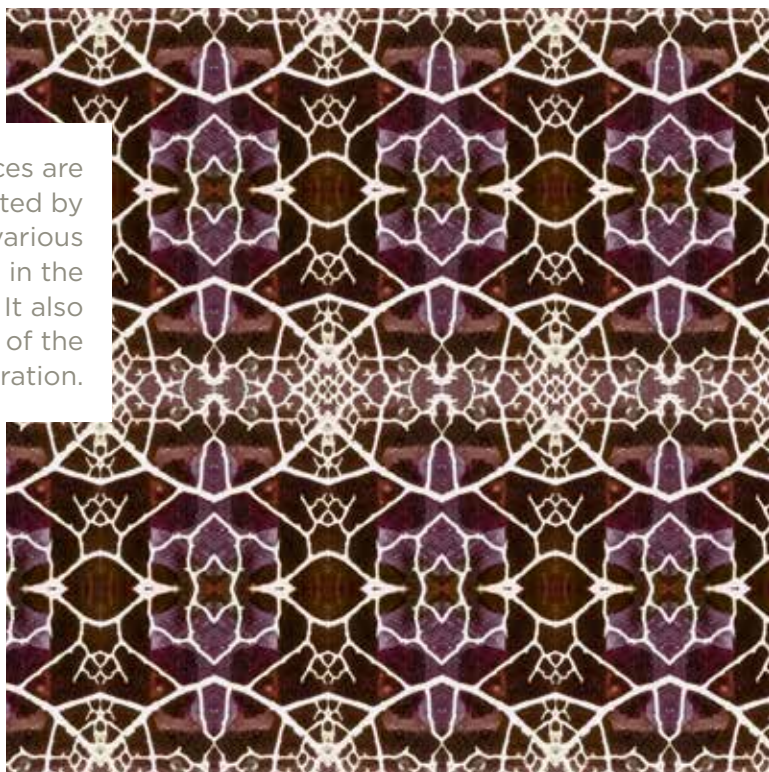
AUTUMN





AUTUMN

Spaces are integrated by combining various designs in the collection. It also tells the story of the artist's inspiration.







*You can't tame the  
spirit of someone who  
has magic in their veins*